

IBM i Solution Edition for Help/Systems

Help/Systems and IBM Offer Automation, Data Access, Security, and Virus-Protection Solutions for POWER7 Systems Running IBM i

Announcing IBM® i Solution Editions—your chance to bundle the experience and expertise of IBM with the experience and expertise of independent software vendors (ISVs), like Help/Systems, to maximize your IT investments.

IBM Solution Editions are built on POWER7® processor-based systems to minimize complexity, and reduce energy consumption, downtime, and costs. They're offered to you at discounted prices through a network of IBM Business Partners when you also purchase the ISV's software for the solution edition.

Help/Systems Software Plus POWER7 Hardware

The IBM i Solution Edition for Help/Systems lets you bundle the POWER7 hardware offerings with your choice of any combination of Help/Systems software: the Robot Automated Operations Solution from Help/Systems; SEQUEL data access and analysis software, and productivity tools from SEQUEL Software; IBM i security solutions from PowerTech; and virus detection and monitoring solutions from Bytware.

Help/Systems is a group of industry-leading, IBM i-focused companies that are totally dedicated to customer satisfaction and support. Help/Systems develops, markets, and supports the world's leading software solutions for IBM i systems.

"Help/Systems is a big believer in the IBM i marketplace," says Doug Fulmer, Channel Partner Manager. "We provide a constant stream of innovative products to help make IBM i systems even more powerful and efficient. And, we are investing in products, support, and partnerships that will help drive the success of IBM i on IBM Power Systems well into the future."

The Bottom Line

Together, IBM and leading ISVs, like Help/Systems, provide solutions that blend the power of IBM Power Systems™ and IBM i with top-notch business applications, superior service, and first-class support. IBM i Solution Editions can help your businesses:

- Increase insight for confident decision making
- Improve productivity, efficiency, and responsiveness
- Reduce operations costs and increase flexibility
- Keep the costs of acquisition and ownership reasonable and competitive



*Total Integration with IBM i
IBM Systems and Technology Group*

Help/Systems Companies:



The Software

The Robot Automated Operations Solution: An Integrated Suite of IBM i Automation Tools

Managing a data center is never easy—you have to handle staffing, technology, and regulatory issues. The key to a smooth-running data center is to automate your operations. Help/Systems has over 28 years of experience providing operations automation solutions. Today, the Robot Automated Operations Solution is a complete line of software dedicated to automating Power Systems (System i,[®] iSeries,[®] AS/400[®]) running IBM i.

Here's a quick overview of some key parts of the Solution:

- **Robot/SCHEDULE[®]** software automates common operator duties, including job scheduling and batch job management, and lets you schedule jobs based on time, date, events, and more.

The Schedule Activity Monitor (SAM) helps you monitor your job schedule—in real time.

- **Robot/SCHEDULE[®] Enterprise** is a Robot/SCHEDULE add-on that lets you schedule jobs and monitor events on Windows,[®] UNIX,[®] and Linux[®] servers connected to your IBM i server. You can create an event-driven job schedule that spans multiple servers and platforms.
- **Robot/ALERT[®]** notifies an expert or group of experts if your system needs help. It sends text, e-mail, and pager messages in response to system or program events.

- **Robot/NETWORK[®]** monitors your IBM i network (or partitions) for events that need corrective action to automate and centralize network management. It also distributes operating instructions for the Robot products to networked systems automatically.
- **Robot/CONSOLE[®]** monitors system console messages, resources, and system logs, redirects or suppresses messages automatically, notifies experts, and performs recovery procedures.
- **Robot/SAVE[®]** backup, recovery, and media management software, automates the process of saving and restoring IBM i data. Robot/SAVE is also a disaster recovery package that can restore one or more objects, or an entire system.

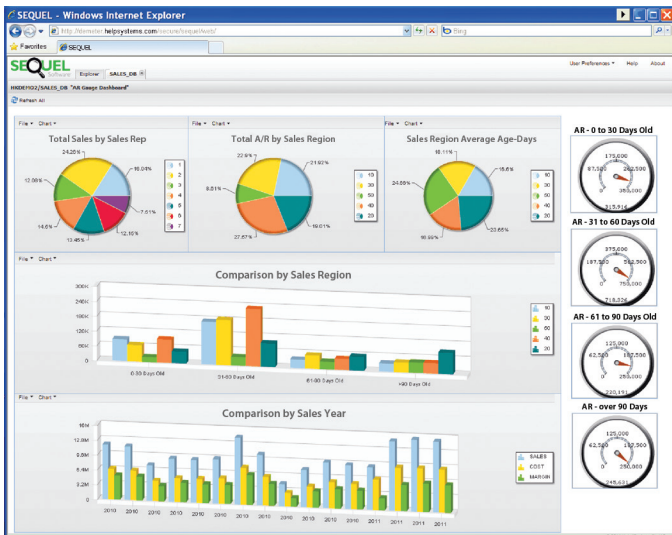
Each product in the suite can work independently to automate its own operations management area. Together, they offer a complete workload automation software solution for IBM i servers, systems, and networks. For more information, and a complete product listing, visit www.helpsystems.com/products.

SEQUEL Software: IBM i-based Data Access and Analysis, and More

As the economy becomes more global and competitive, your business must continually find ways to increase sales and reduce costs. You must target your marketing dollars accurately, use precise sales tactics, and monitor results in real time. SEQUEL Software[™] specializes in software that makes systems running IBM i the most powerful and efficient in the world.

- **SEQUEL[™]** the premiere data access and analysis software, is designed for all users. Executives can display, e-mail, or extract SEQUEL results from IBM i or remote databases using desktop icons. Power users can manipulate data using views (queries). Administrative staff can easily run reports and processes.

With SEQUEL, you can extract information from your databases; summarize transaction data and send it to a desktop dashboard or a Web browser; create custom reports quickly; and use dynamic drill-down to analyze data in depth, even information from other platforms.



SEQUEL dashboards provide clear, easy insight into your business.

SEQUEL Software also offers:

- **SEQUEL Web Interface™** work with your SEQUEL objects from your Web browser
- **ABSTRACT™** an integrated set of programming tools
- **ESEND™** automated e-mail distribution and notification
- **AnyDate™** a software utility that lets you override the IBM i system date and time

For more information, and a complete product listing, visit www.sequel-software.com/products.

PowerTech: IBM i Security Solutions

Companies today face enormous security challenges. They need to maintain the security of their systems and critical data while ensuring compliance with regulations, legislation, and security best practice requirements.

The PowerTech Group is the leading expert in automated security solutions for IBM Power Systems running IBM i. These systems host sensitive corporate data, so every organization needs to practice proactive security to manage today's compliance regulations and data privacy threats. Companies worldwide rely on PowerTech® security solutions to provide the information needed to stay informed and to enforce security policies.

- **Authority Broker™** manages powerful user profiles by allowing users to swap into higher privilege profiles, and audits activity during the swap.

- **Network Security™** monitors and controls network access to your system through common exit points such as FTP, ODBC, and Telnet.
- **Compliance Monitor™** audits system security data, helps define security policies, and provides proof of compliance.
- **Interact™** sends real-time notification of IBM i security-related events to a SIM console.
- **DataThread™** monitors database changes in real time and provides notification, authorization, and compliance reporting.

With PowerTech solutions, you can efficiently and effectively secure your critical IBM i systems and data, while you comply with SOX, HIPAA, PCI, and other regulations. For more information, and a complete product listing, visit www.powertech.com/products.

Bytware Solutions for IBM i

Bytware solutions help you monitor, manage, and secure your IBM i world. Bytware first started supporting the IBM community by automating monitoring and notification. With the addition of the first (and only) server-based native anti-virus solution for IBM i, Bytware has become a leader in the field of virus protection.

Today, Bytware works to identify each customer's needs and deliver the necessary tools to make their business the best it can be. Bytware solutions include:

- **MessengerPlus® & MessengerConsole®** offer automated monitoring and alerts to help you control your IBM Power Systems servers and stay in-the-know.
- **StandGuard Network Security®** offers security to protect your Power Systems servers with simplified, object-based exit point control.
- **StandGuard Anti-Virus®** provides advanced virus detection with McAfee power that is designed specifically for IBM i, AIX®, Linux®, and Domino® servers.

Bytware solutions are backed by more than 20 years of experience and thousands of installations, including at least one division of every Fortune 100 company. For more information, and a complete product listing, visit www.bytware.com/products.

The Platform

IBM i Solution Edition for Help/Systems, A Powerful, Scalable Platform



IBM Power 720 Express (tower)

The IBM i Solution Edition hardware for Help/Systems is based on the latest generation of POWER7 systems from IBM, a powerful, scalable, 64-bit computing platform. You can order rack-mounted or desk-side models of the 4-, 6-, or 8-core IBM Power 720 Express systems, and IBM Power 740 Express systems with as many as 16 cores, and enjoy all the IBM Solution Edition discounts (see the Benefits of the IBM i Solution Edition for Help/Systems insert).

IBM Power Systems provide an advanced computing architecture that can run IBM i, AIX, and Linux applications simultaneously. They offer much improved levels of price and performance, and feature industry-leading energy consumption and power management tools.

IBM i is an advanced operating system that includes IBM's DB2 relational database, U.S. Department of Defense certified levels of security, Web services, high-performance Java application deployment options, and world-class ease-of-use, for minimal downtime and lower costs.

IBM i Solution Editions help businesses take advantage of the experience and expertise of IBM and its ISVs to build business value in IT investments. Each Solution Edition provides an affordable, simplified, easy-to-manage, high-performance IT environment for core business applications.



IBM Power 740 Express (rack-mount)

No Assembly Required

Check out the IBM Systems Magazine article, *No Assembly Required*, at www.ibmssystemsmag.com/power.

Mix and Match Software

Current and new customers qualify for the Help/Systems Solution Edition by upgrading existing licensing; by adding additional software products; or by adding or upgrading any other software available from the Help/Systems companies.

For More Information

The IBM Solution Edition is available when a customer purchases new IBM Power Systems hardware and any combination of Help/Systems software. For details, visit the following:

www.ibm.com/systems/power/hardware/editions/solutions.html



www.helpsystems.com/i_solution 

www.sequel-software.com/i_solution 

www.powertech.com/i_solution 

www.bytware.com/i_solution 

Or, contact Doug Fulmer at: doug.fulmer@helpsystems.com.

help/systems

World's Leader in Power Systems
Software Solutions

952/933-0609
info@helpsystems.com
www.helpsystems.com

Benefits of the IBM i Solution Edition for Help/Systems

With the IBM i Solution Edition for Help/Systems, IBM offers discounts on POWER7 systems with the purchase of Help/Systems software; Help/Systems adds FREE training and support vouchers that you can mix and match to suit your needs.

Power 720 Express 4-Core System	
Benefits	Required ISV Software Purchase
<ul style="list-style-type: none"> ✓ First three processor activations FREE ✓ 72% discount on user entitlements ✓ Unlimited IBM i Access user entitlements ✓ One no-charge IBM service voucher ✓ One no-charge tuition voucher, good for three Help/Systems education classes¹ ✓ One half-day Help/Systems WebEx training session on installation and setup 	\$6,500

Power 720 Express 6- or 8-Core System	
Benefits	Required ISV Software Purchase
<ul style="list-style-type: none"> ✓ First five processor activations FREE ✓ 72% discount on user entitlements ✓ Unlimited IBM i Access user entitlements ✓ One no-charge IBM service voucher ✓ Two no-charge tuition vouchers, good for three Help/Systems education classes¹ ✓ One half-day Help/Systems WebEx training session on installation and setup 	\$25,000

Power 740 Express	
Benefits	Required ISV Software Purchase
<ul style="list-style-type: none"> ✓ 50% of processor activations FREE ✓ Two IBM i licenses at no charge ✓ Unlimited IBM i Access user entitlements ✓ One no-charge IBM service voucher ✓ Three no-charge tuition vouchers, good for three Help/Systems education classes¹ ✓ One, full-day Help/Systems WebEx training session on installation and setup² 	\$60,000

S0711BMP1

¹ Each no-charge tuition voucher entitles one person to attend any three of the following classes for FREE, up to a \$3600 value:

Robot: Robot/SCHEDULE Basics; Robot/SCHEDULE Operations; Robot/SCHEDULE Administration, Part 1 and 2

SEQUEL: Basic Data Access; Intermediate SEQUEL; SEQUEL Report Writer

PowerTech: Network Security: The Basics; Network Security: Advanced Part 1 and 2; Configuring and Using Authority Broker

² A FREE day of installation and setup training is a \$2500 value.

For More Information

The IBM Solution Edition is available when you purchase new IBM Power Systems hardware and any combination of Help/Systems software. For details, visit the following:

www.ibm.com/systems/power/hardware/editions/solutions.html

www.helpsystems.com/i_solution

www.sequel-software.com/i_solution

www.powertech.com/i_solution

www.bytware.com/i_solution

help/systems

World's Leader in Power Systems
Software Solutions

952/933-0609

info@helpsystems.com

www.helpsystems.com

Or, contact Doug Fulmer at: doug.fulmer@helpsystems.com

© Help/Systems, LLC. All trademarks and registered trademarks are the property of their respective owners.